

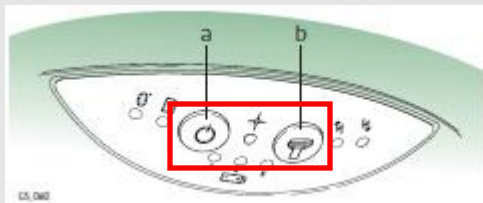
Leica Geosystems GNSS Quick Guide

Resetting GNSS Almanacs

This Quick Guide outlines the procedures for resetting the GNSS almanacs on Leica Geosystems GNSS sensors. On December 31, 2016, the IERS will introduce a leap second into UTC.

As a result of this update, Leica users may need to take the following steps to reset their receiver's almanacs:

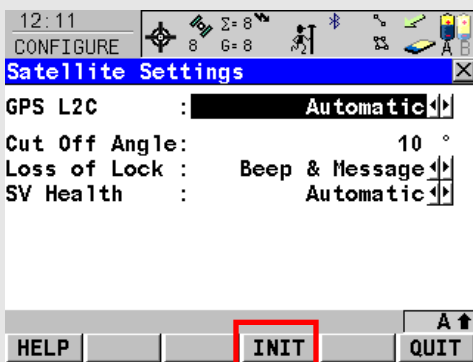
Current GNSS Sensors (GS14, GS15, GS16)



To reset the almanac on a GS series GNSS receiver:

1. Power on the sensor and wait for it to boot up.
2. Press and hold both the Power (a) and Function (b) buttons on the front of the sensor. After 1 second, the center position LED will start rapidly flashing. Release both buttons *while the Position LED is flashing*. If correctly performed, the center position light will turn off and then begin slowly flashing amber as it reacquires a position. This may take up to 15 minutes.

System1200 Sensors (GX, RX, ATX)



To reset the almanac on a System1200 receiver:

1. Power on the sensor and wait for it to boot up.
2. From the Main Menu, select **Config / Instrument Settings / Satellite Settings**.
3. In the Satellite Settings screen, press **Shift + F4 Init** to initialize the GNSS almanacs. The Position icon in the upper right should disappear and the number of satellites tracked should reset to zero. The receiver will then begin reacquiring a position. This may take up to 15 minutes.

- when it has to be **right**