

Calgary Office  
 #2, 21 Highfield Circle SE  
 Calgary, AB T2G 5N6  
 (403)259-3992

Edmonton Office  
 16304 111 Avenue  
 Edmonton, AB T5M 4G3  
 (780)486-2155

Vancouver Office  
 #10, 3671 Viking Way  
 Richmond, BC V6V 2J5  
 (604)214-9453

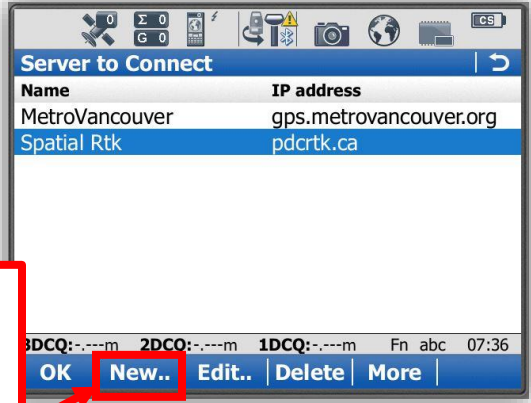
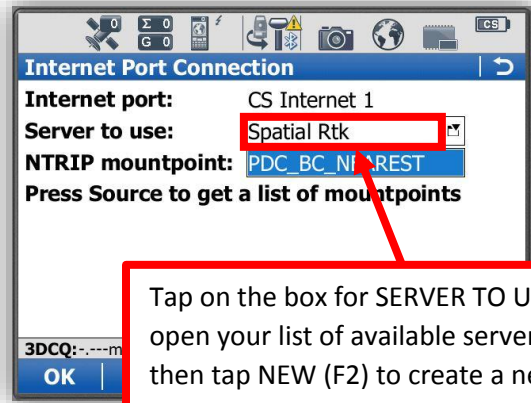
## Editing Internet Port Connection Server and NTRIP information

With the change over from Pleiades Data Corporation RTK corrections services to Leica's SmartNet North America will require the user to change the assigned SERVER TO USE in the Internet Port Connections.

**All support issues related to network connections, usernames and passwords, are now being handled by Leica SmartNet support. Contact: <https://support.smartnetna.com/hc/en-us/>**

Press the Star Key on your controller keyboard and select SERVER/MOUNTPOINT

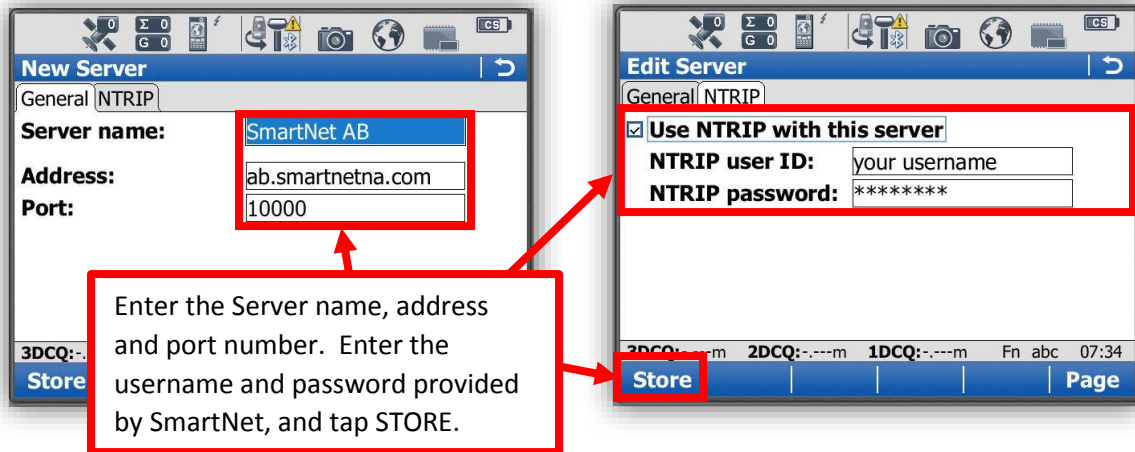
Tap on the box for SERVER TO USE to open your list of available servers, then tap NEW (F2) to create a new server.



Calgary Office  
 #2, 21 Highfield Circle SE  
 Calgary, AB T2G 5N6  
 (403)259-3992

Edmonton Office  
 16304 111 Avenue  
 Edmonton, AB T5M 4G3  
 (780)486-2155

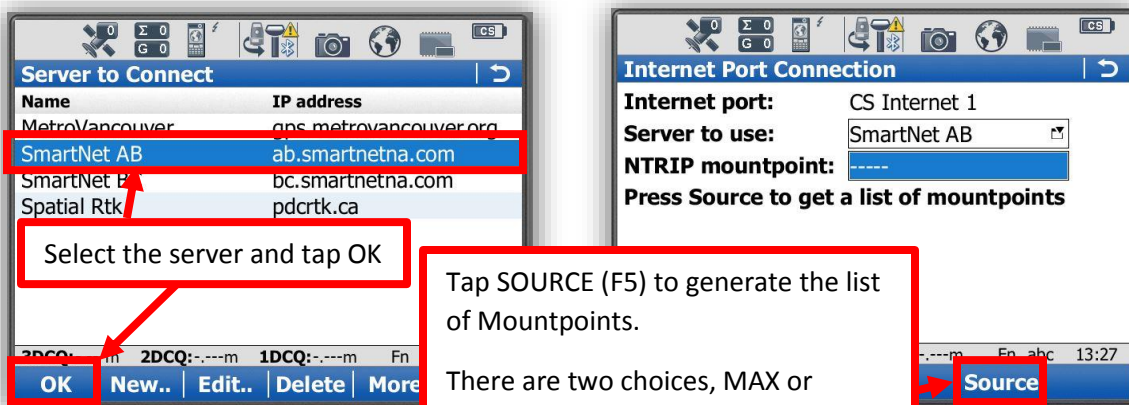
Vancouver Office  
 #10, 3671 Viking Way  
 Richmond, BC V6V 2J5  
 (604)214-9453



**New Server**  
 General | NTRIP  
 Server name: SmartNet AB  
 Address: ab.smartnetna.com  
 Port: 10000

**Edit Server**  
 General | NTRIP  
 Use NTRIP with this server  
 NTRIP user ID: your username  
 NTRIP password: \*\*\*\*\*

Enter the Server name, address and port number. Enter the username and password provided by SmartNet, and tap STORE.



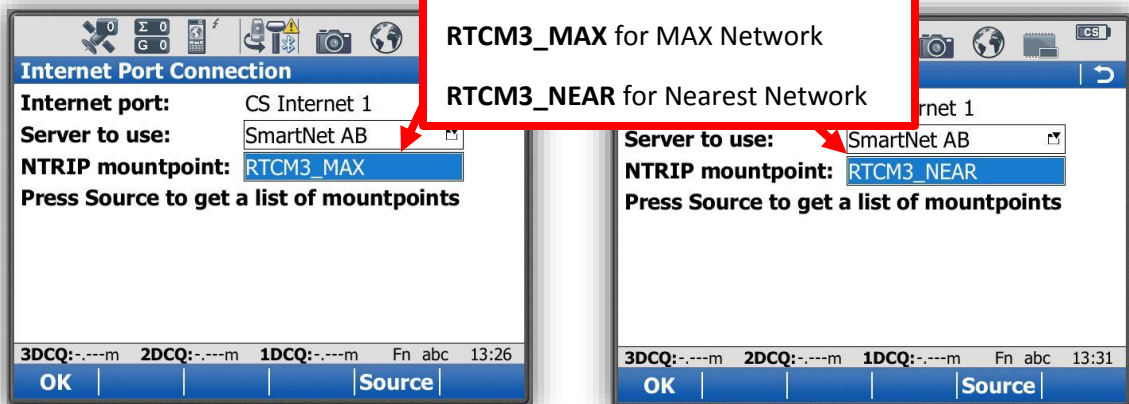
**Server to Connect**

| Name           | IP address             |
|----------------|------------------------|
| MetroVancouver | gps.metrovancouver.org |
| SmartNet AB    | ab.smartnetna.com      |
| SmartNet BC    | bc.smartnetna.com      |
| Spatial Rtk    | pdcrtk.ca              |

Select the server and tap OK

**Internet Port Connection**  
 Internet port: CS Internet 1  
 Server to use: SmartNet AB  
 NTRIP mountpoint: -----  
 Press Source to get a list of mountpoints

Tap SOURCE (F5) to generate the list of Mountpoints.



**Internet Port Connection**  
 Internet port: CS Internet 1  
 Server to use: SmartNet AB  
 NTRIP mountpoint: RTCM3\_MAX  
 Press Source to get a list of mountpoints

There are two choices, MAX or NEAREST. Select the Mountpoint that matches your network type

- RTCM3\_MAX for MAX Network
- RTCM3\_NEAR for Nearest Network

**Internet Port Connection**  
 Internet port: CS Internet 1  
 Server to use: SmartNet AB  
 NTRIP mountpoint: RTCM3\_NEAR  
 Press Source to get a list of mountpoints