



Leica Viva GNSS

October 2010

CS 10/15 and GS 10/15 Web Server Connection

Summary

The Web Server for the GS 10/15 is a web-based tool to interface with the GS10/GS15 receivers via a connection to a PC or a CS controller. This application is integrated into the GS firmware and cannot be deleted.

Three methods of accessing the Web Server will be illustrated:

- PC connection
- CS connection via cable
- CS connection via Bluetooth

Upon connection to the web server, the user will be able to access:

- Wake Up Sessions
- Operating Settings
- Satellite Settings
- Raw Data Options
- Instrument Status
- Load System Files
- Language management
- Help & Support

CS 10/15 and GS 10/15 Web Server Connection

Accessories



USB cables		
767 899	GEV234	USB cable, 1.65m, connects GS10/GS15 receiver or CS10/CS15 controller to USB port of a PC or connects GS10/GS15 receiver to CS10/CS15 controller. (Lemo to USB)
772 807	GEV237	USB cable, 1.65m, connects GS10/GS15 receiver to CS10/CS15 controller. (Lemo to Lemo)

Notes

Before continuing with this guide, it is assumed that the user has successfully loaded the Active Sync and GS drivers. Please review the driver installation guide before the attempt to connect to the Web Server.

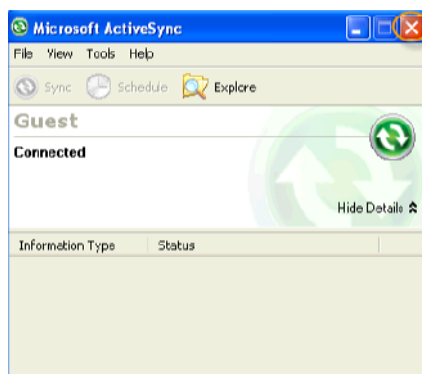
With the Web server connection via PC, the only option is through a GEV234 cable while the connection via CS field controller it is possible to make the connection through the GEV234 , GEV237 cable or Bluetooth radio.

Procedure: Connecting GS 10/15 to Web Server via PC

With the GEV234 cable connected to Port 1 on the GS, The GS powered on and the USB connection to the PC is made , Active Sync will attempt to set up a new partnership. Select No and press Next>



Press the 'X' in the upper right corner of the ActiveSync Explore page



Continued on Next Page

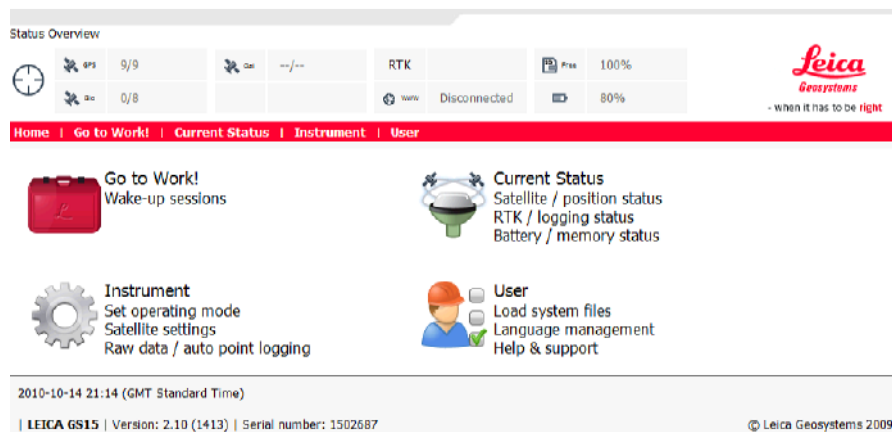
CS 10/15 and GS 10/15 Web Server Connection

It should be known that the ONLY access to the web server is through Microsoft Internet Explorer



In Internet explorer type in **http://192.168.254.2**

With a successful connection, the web server will be displayed.



Procedure: **Connecting** **GS 10/15 to** **Web** **Server via** **CS** **(BT or Cable)**

With the GEV237 or GEV234 Cable or a successful Bluetooth connection from the CS to the GS, it is possible to access the web server. No internet connection is required. The same principles are relevant as connecting to the web server via PC.

Smartworx can either be minimized or be exited from. On the Windows CE desktop of the CS click either Webserver (Cable) or Webserver (BT) to access the web server on the CS.

Once the shortcut is selected the CS will automatically connect to the Webserver via the Internet Explorer in Windows CE. You will not be required to enter the IP address.

